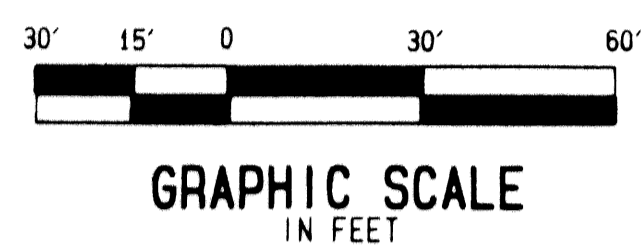
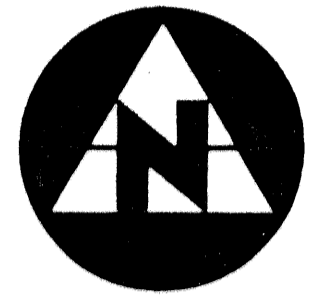


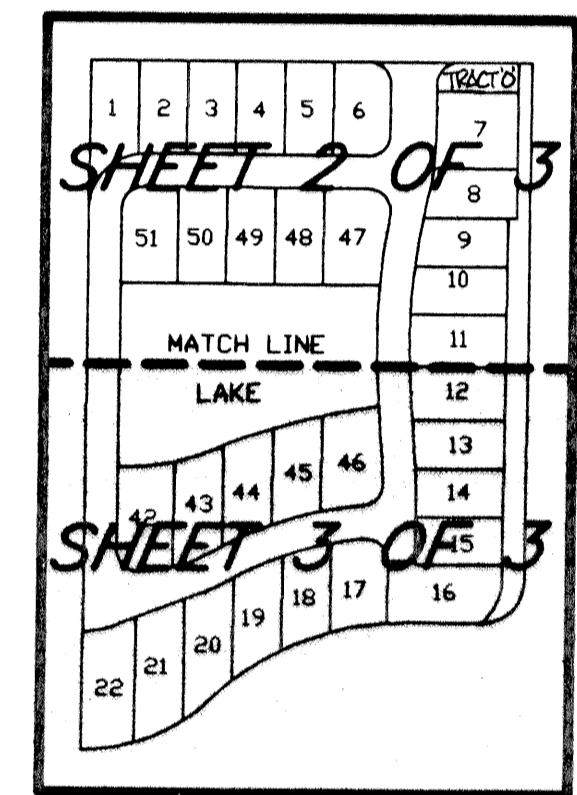
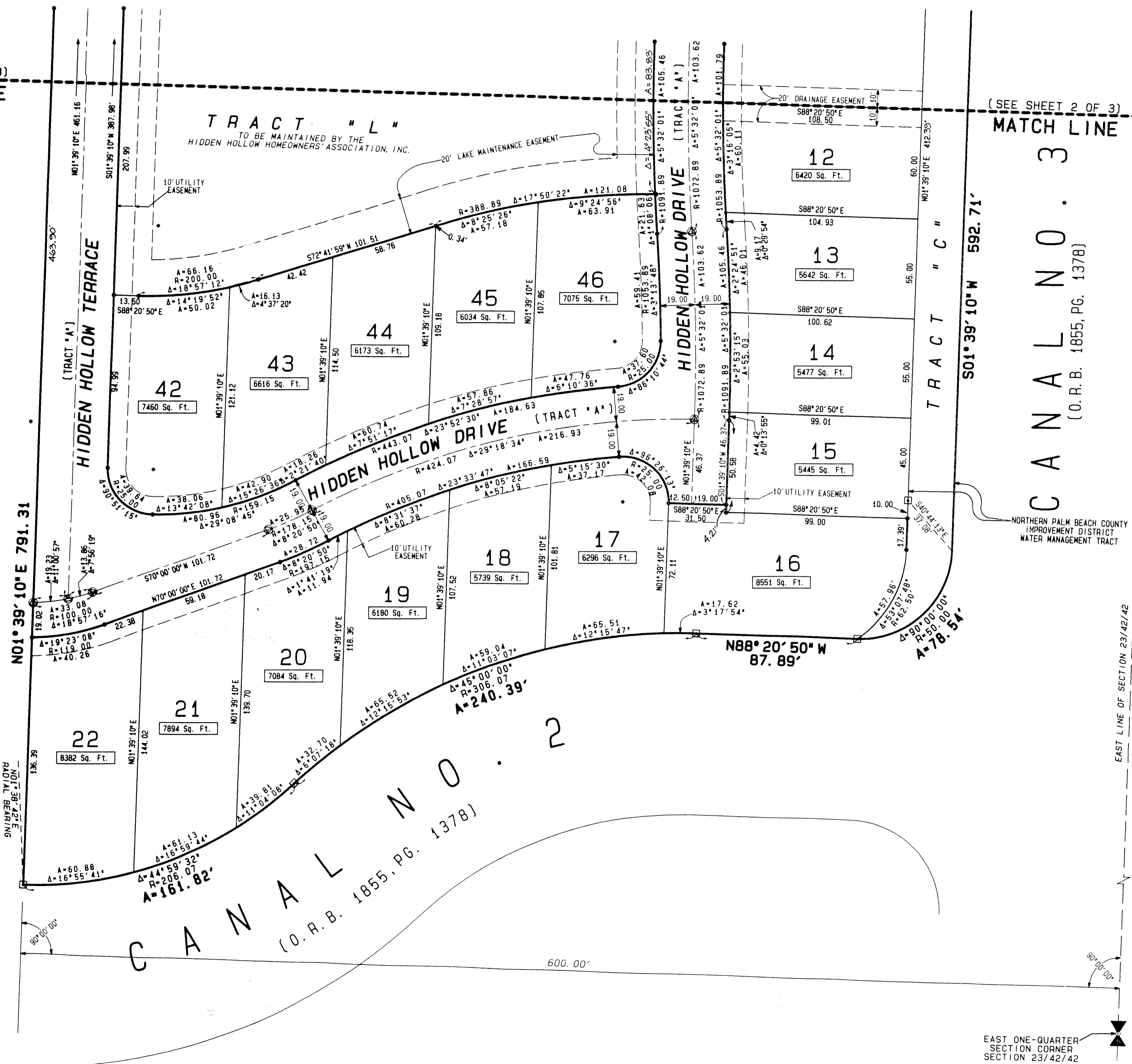
(A PLANNED UNIT DEVELOPMENT)

LYING IN THE EAST ONE-HALF OF SECTION 23, TOWNSHIP 42 SOUTH, RANGE 42 EAST, CITY OF PALM BEACH GARDENS, PALM BEACH COUNTY, FLORIDA

(SEE SHEET 2 OF 3)
MATCH LINE



(SEE SHEET 2 OF 3)
MATCH LINE



KEY MAP
NOT TO SCALE

SURVEYOR'S NOTES AND LEGEND:

1. BEARINGS ARE BASED ON THE NORTH LINE OF SECTION 23, TOWNSHIP 42 SOUTH, RANGE 42 EAST, PALM BEACH COUNTY, FLORIDA, AS BEING NORTH 88°30'27" WEST BASED ON STATE PLANE GRID AZIMUTHS, FLORIDA EAST ZONE, PALM BEACH COUNTY ENGINEERING DEPARTMENT SECTIONAL DATUM, PALM BEACH COUNTY, FLORIDA.
2. IN THOSE INSTANCES WHERE UTILITY/DRAINAGE STRUCTURES ARE CONSTRUCTED IN CONFLICT WITH THE PLATTED PERMANENT CONTROL POINTS (P.C.P.), STRADDLERS MONUMENTED AS PERMANENT CONTROL POINTS WILL BE SET TO REFERENCE THE PLATTED P.C.P. POSITION.
3. ALL LOT LINES INTERSECTING CURVES ARE NON-RADIAL UNLESS OTHERWISE NOTED.
4. ⊙ DENOTES A SET #2424 PERMANENT CONTROL POINT (P.C.P.)
5. ⊠ DENOTES A SET #2424 PERMANENT REFERENCE MONUMENT (P.R.M.)

This instrument was prepared by Wm. R. Van Campen, R.L.S., in and for the offices of Bench Mark Land Surveying & Mapping, Inc., 4152 West Blue Heron Boulevard, Suite 121, Riviera Beach, FL 33404 Fax (407) 844-9658 Phone (407) 848-2102

BENCH MARK
Land Surveying and Mapping, Inc.
4152 West Blue Heron Blvd, Suite 121, Riviera Beach, FL 33404
Fax (407) 844-9658 Phone (407) 848-2102

RECORD PLAT				
HIDDEN HOLLOW PLAT 1				
DWN	S.E.G.	FB	DATE 06/24/96	WO.# P23
CKD	FILE P23H-TD.dwg	SCALE 1" = 30'	SHEET 3 OF 3	

EAST ONE-QUARTER SECTION CORNER SECTION 23/42/42